

Production Cable Tuning Setup & Operation

March, 2015

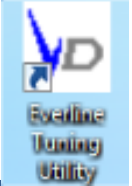


Always disconnect power before handling power connections!

- *When programming Universal Lighting Technologies LED drivers follow procedures compliant with NFPA 70E (National Electric Code) and any other applicable State and Local codes.*
- **System Requirements**
 - Operating System: Windows™ XP, 7, 8.x
 - Hard Drive: Minimum 5 Mbytes of available storage
 - System RAM: 512 Mbytes
 - Interface: USB 2.0 or higher
 - Printer: Zebra #05100GS06407 (Pesa Labeling #753750)

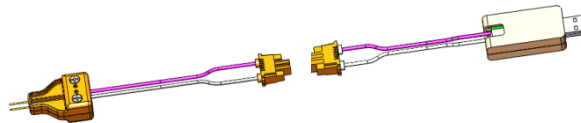
1

Install the ULT Everline programming utility (provided on flash drive). Follow instructions in the setup wizard. Once loaded you should see the “Everline Tuning Utility” icon on the desktop.



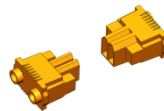
2

Insert the Tuning Adaptor USB device into an available USB 2.0 (or greater) port on the computer. Drivers will automatically be installed the first time this device is plugged into the computer.



“TZ/TW” Models

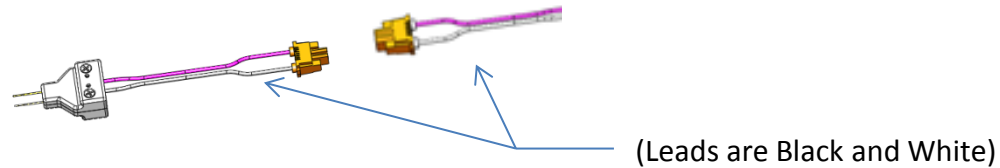
Additional mating connectors are provided to extend the length of the tuning adaptor. It is recommended to use 18 AWG.



3

If powering the LED driver using the supplied power pin adaptor, connect the stripped wire end to the line voltage supply (120 Vac – 277 Vac).

Always disengage power before handling this connector!

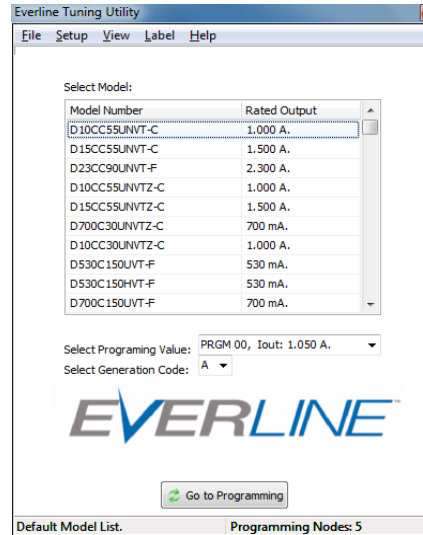


4

Setup the printer per the manufacturer's instructions.

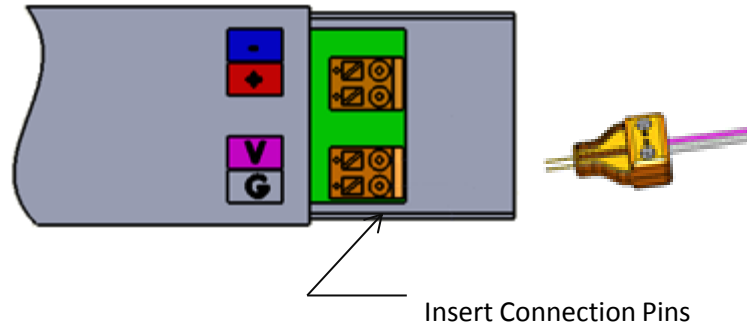
1

Launch the “Everline Tuning Utility” program from the desktop icon or your “Start” menu. The following window should appear:



2

Insert the programming connector into the control connector of the LED driver. *This connector will have the Violet and Gray wires to match the connection on the Driver.*



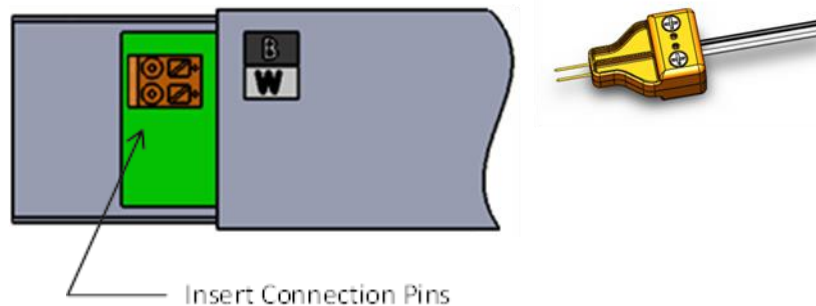
“TZ/TW” Models

NOTE: Polarity is important for the tuning process. Ensure the polarity is correct by verifying that the wire color orientation of the pin connector matches the driver connector label.

3

Insert the power connector into the line input of the LED Driver or insert 18 AWG wiring if not using the pin connector provided. This connector will have the Black and White pair wires to match the connection on the Driver.

Always disengage power before handling this connector!



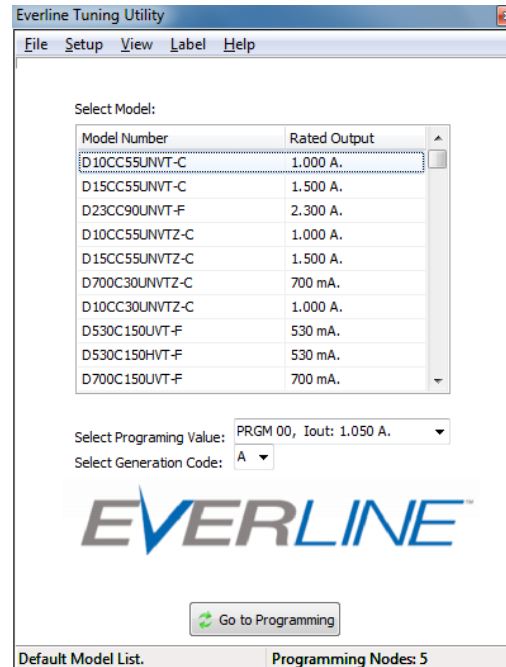
“TZ/TW” Models

4

Apply the power to the driver to program.

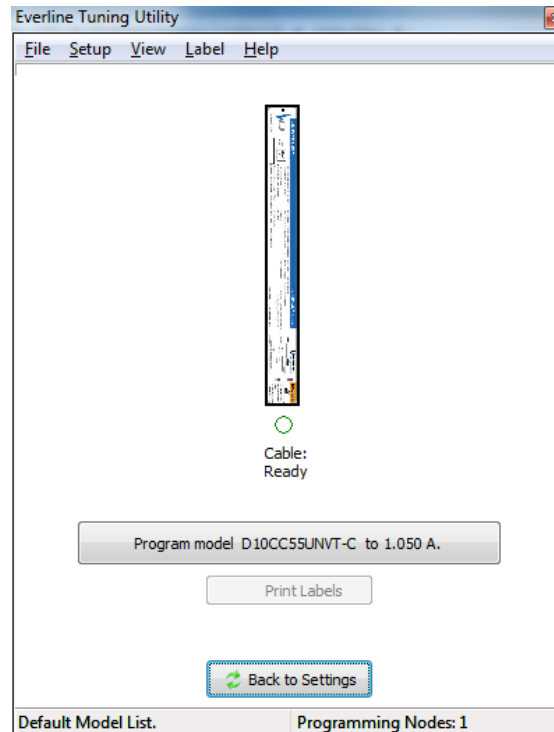
5

Within the tuning utility program select the appropriate driver model from the drop down menu “Select Model”. Then select the output current tune value from the “Select Programming Value” drop down menu.



6

Select the “Go To Programming” button at the bottom of the main screen. The following screen should appear:



7

Select the “Program model XXXXXX” button to tune the connected driver. This tuning process should take roughly 2 – 5 seconds. Once the driver has been programmed the “Cable Ready” icon below the driver image should appear solid green. If this icon is not green after programming, disengage power and check all connections to the driver.

Always disengage power before handling the power connector!

Once power is applied again, select the “Program model XXXXXX” button again.

Once the programming is successfully completed, the “Print Label” button should be enabled (not grayed out).

8

To print a label, simply select the “Print Label” button. This will print one label with the tune value and output current that was chosen in the settings drop down menu earlier.